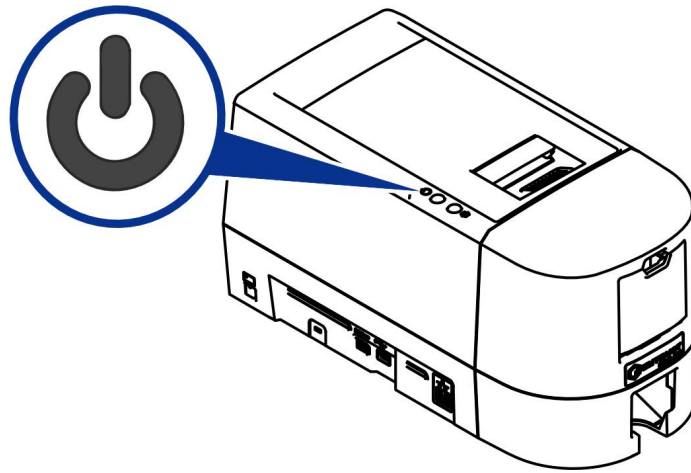


## Sigma DSE Printer Repackaging for Shipment

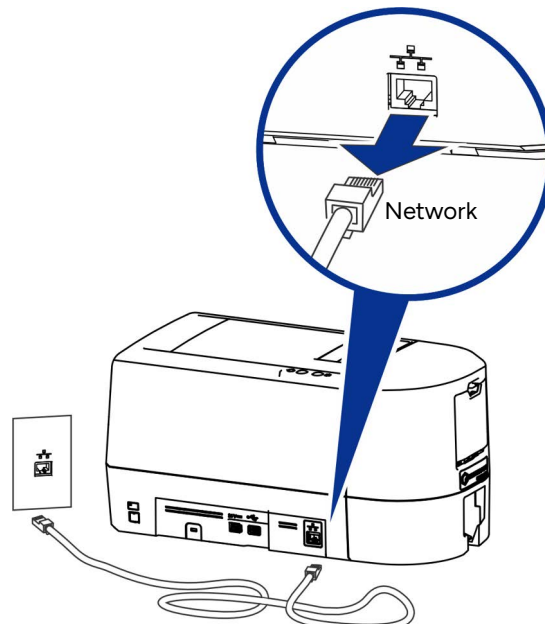
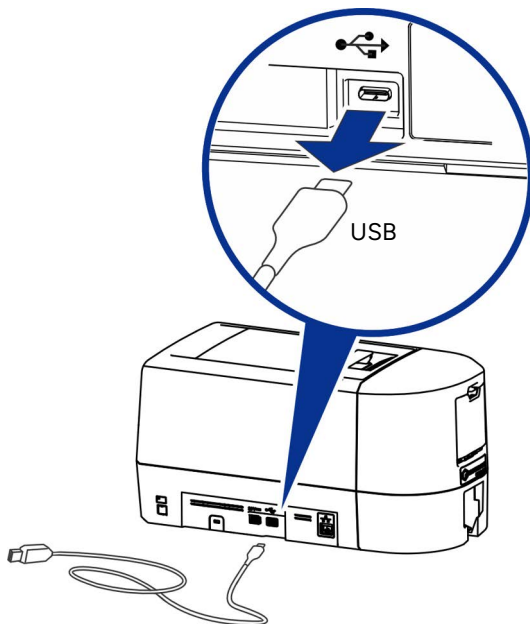
Use the following procedures to prepare the Entrust Sigma DSE Direct to Card Printer for shipment.

1. Press the power button to power off the printer.

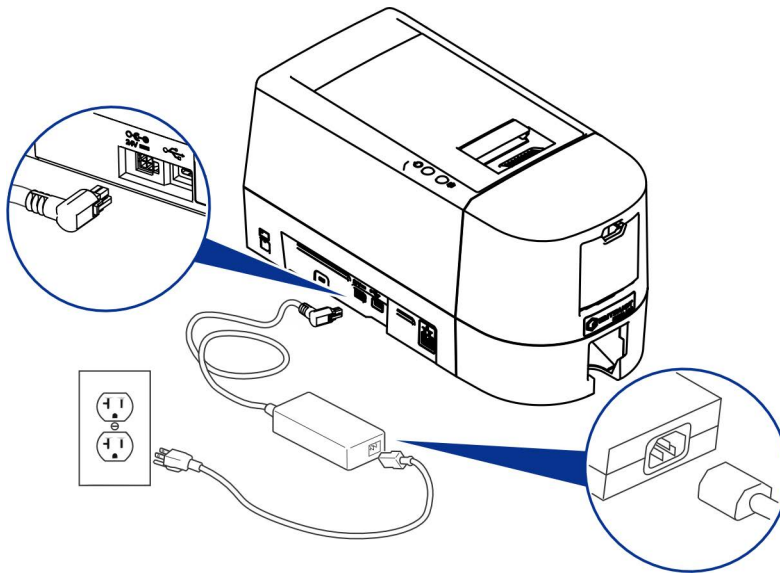


**Caution:** Wait until all the lights on the top panel are off to make sure that the printer power is off.

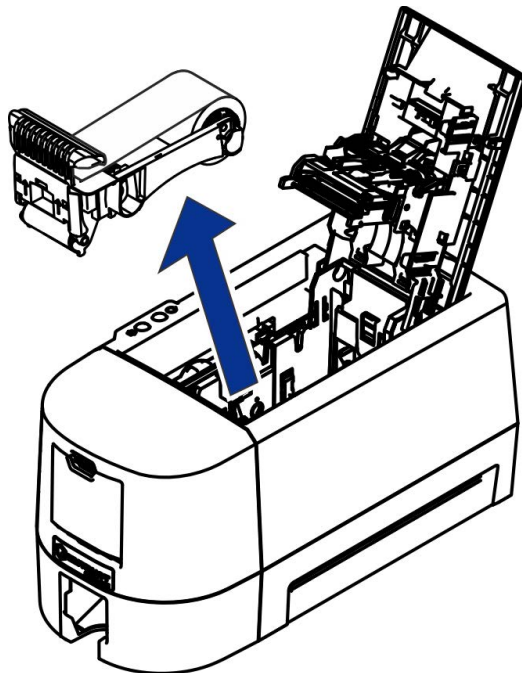
2. Disconnect the USB or network cable (the cable is not required for shipment).



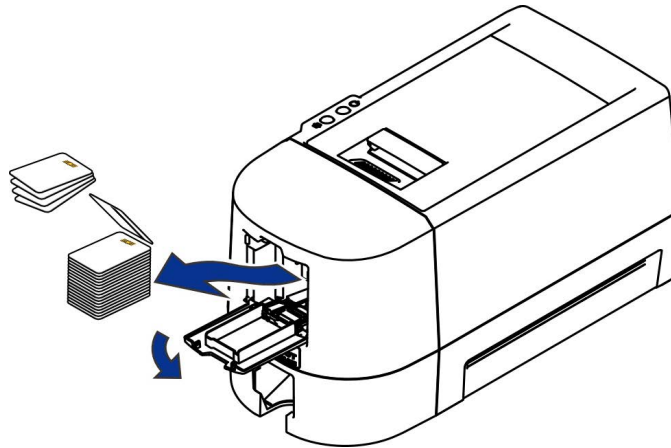
3. Unplug the power supply cord from the printer (the power supply and power cord are not required for shipment).



4. Remove the printer supplies.
  - a. Open the printer swingarm.
  - b. Remove the supply cartridge (the cartridge is not required for shipment).
  - c. Close the swingarm.



- d. Open the hopper door.
- e. Remove any unused cards from the hopper.
- f. Close the hopper door.



- 5. Pack the printer.
  - a. Insert the foam end caps on the ends of the printer.
  - b. Lift the printer with end caps and place them in the shipping box.
  - c. Close and secure the box with shipping tape.

